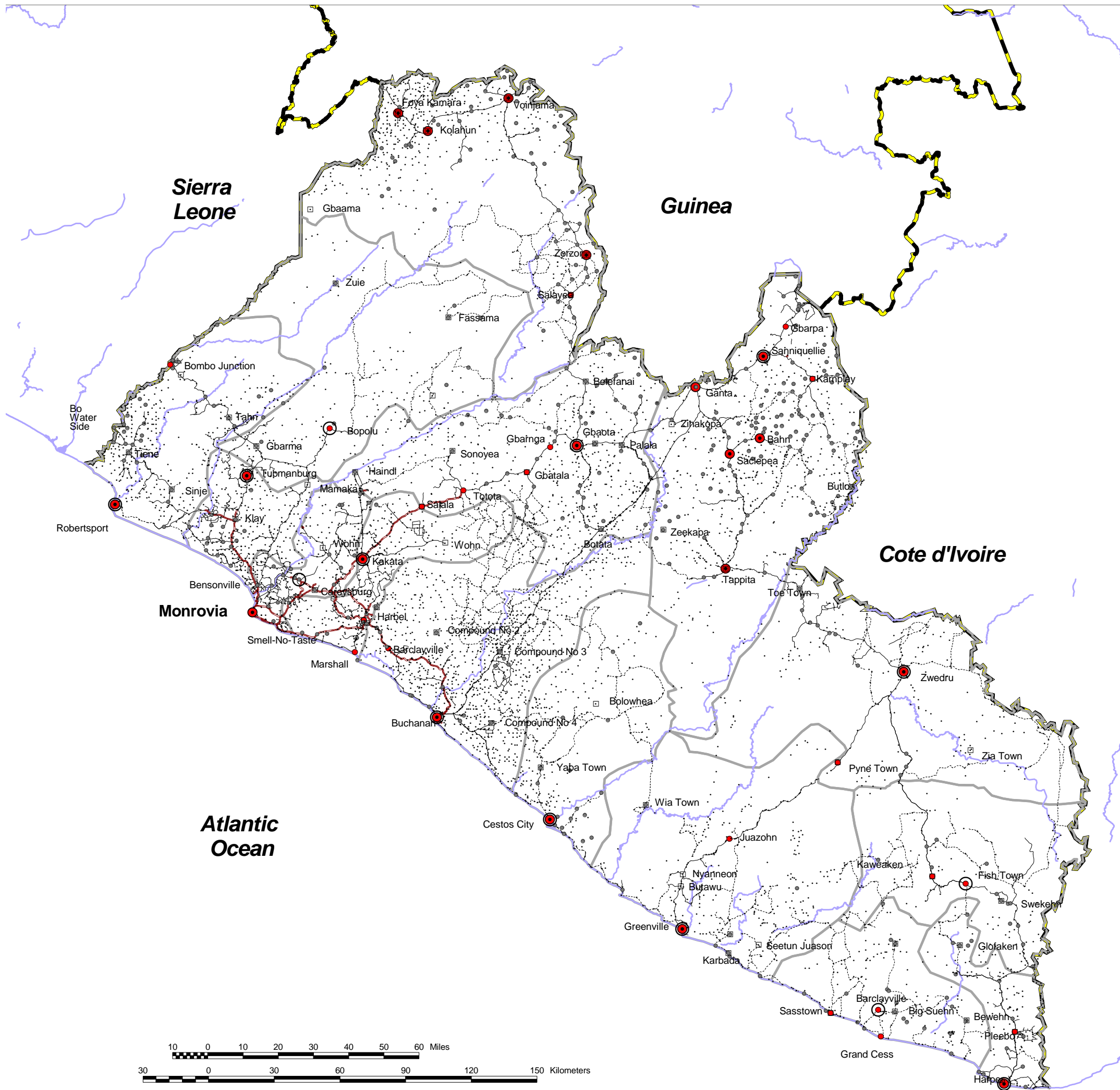


Settlements by population size, and county and district capitals



County Name	County Capital	District Capital
Bomi	Tubmanburg	Klay
Bong	Gbarnga	Mecca Town
Grand Bassa	Buchanan	Haindi
Grand Cape Mount	Robertsport	Gbaota
Grand Gedeh	Zwedru	Botata
Grand Kru	Barclayville	Palala
Lofa	Voinjama	Salala
Marghibi	Kakata	Sonoyea
Maryland	Harper	Gbatata
Montserrado	Bensonville	Belefanai
Nimba	Sanniquellie	Owensgrove
River Cess	Cestos City	Compound No 1
River Gee	Fish Town	Compound No 2
Gbapolu	Bopolu	Compound No 3
		Compound No 4

**Populated places**

- City (pop. >10,000)
- Large town (pop. 2,000-10,000)
- Town (pop. 200-2,000)
- Village (pop. < 200)
- County capital
- District capital

**Road**

- Hard surface road
- - - Loose surface road
- ⋯ Track

**Other symbols**

- ▭ County boundary
- ▬ International boundary
- ~ Major river
- ⋯ Coastline

Map scale 1:1,800,000

This map is intended to give an overall impression of settlement density and size, prior to major population displacements.

The settlement size classifications are approximate and based on maps from the 1980's, updated by staff from the Ministry of Planning and Economic Affairs.

Map catalog: LIB068  
Map production date :18-12-03

Data sources:  
Settlement locations - US National Imagery and Mapping Agency, revised by Ministry of Planning and Economic Affairs, 2003.

Settlement size classification from US JOG (1:250,000 scale) topographic maps series with revision by the Ministry of Planning and Economic Affairs.

Boundaries depicted do not represent official endorsement by the Government of Liberia or by the United Nations. Many boundaries were derived from small scaled maps and will be updated as soon as better information is available.

HIC Liberia  
hic.liberia@undp.org  
www.humanitarianinfo.org  
UNDP Building 1st floor  
Simpson Bld.  
P.O. Box 0274  
Mamba Point  
Monrovia, Liberia

